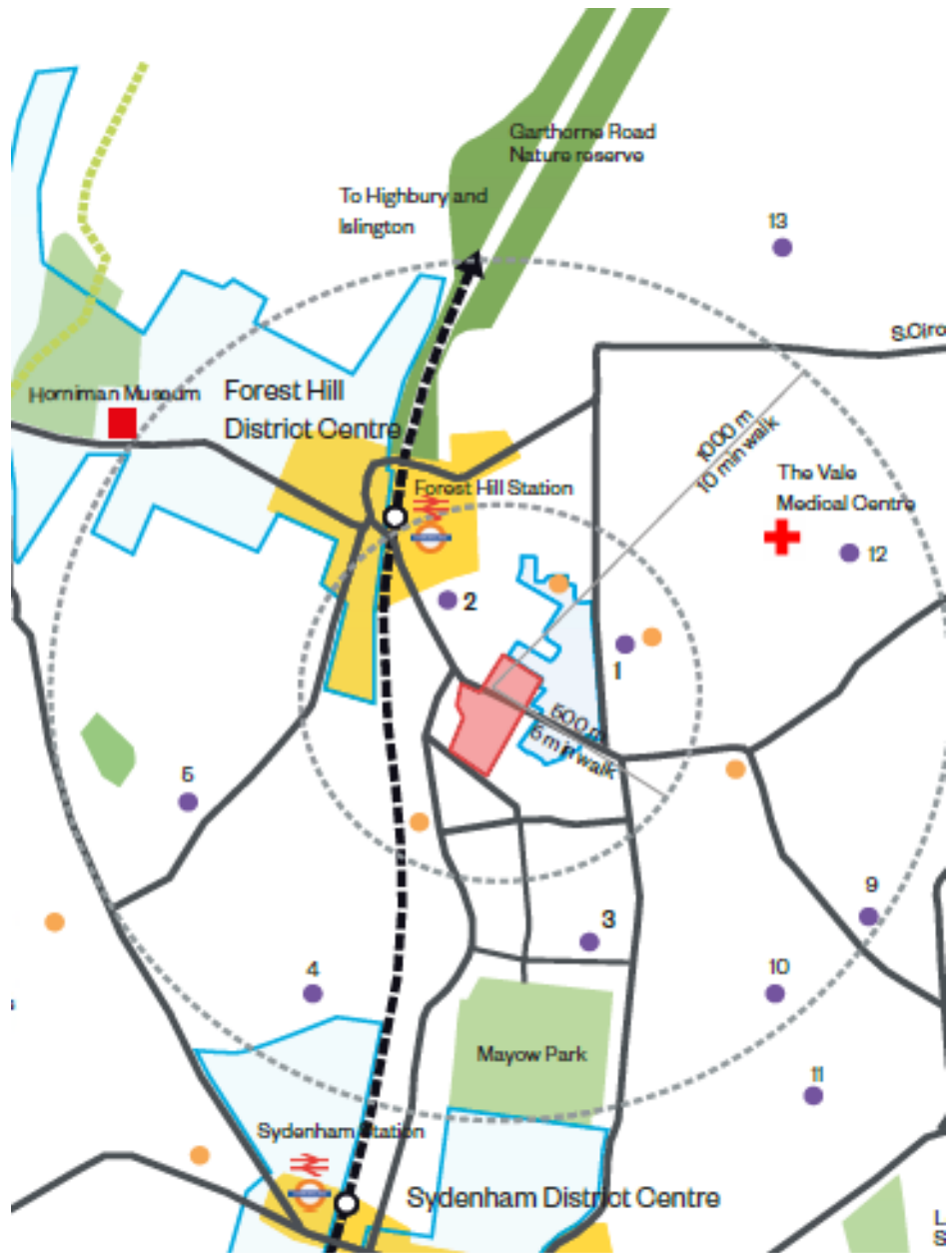


Valentine Court, SE23
Application No. DC/22/127024

This presentation forms no part of a planning application
and is for information only.

The construction of residential dwellings (Use Class C3) together with new play space, provision of car parking spaces, cycle parking spaces, refuse/recycling stores and associated landscaping works at Valentine Court, Perry Vale, SE23.

	1 Bed	2 Bed	3 Bed	Total
London Affordable Rent	12	11	3	26
Shared Ownership	3	8	4	15
Total	15	19)	7	41



Existing Site Photos



1. View looking west toward Laundry Building



2. View of Existing Blocks to Valentine South facing Perry Vale



3. View of Entrance Core to existing block 1-20



4. View of block 21-32 fronting Perry Vale



5. View looking into courtyard and car park to Valentine North



6. View of demolished caretaker block location and access road beyond



7. View of former laundry block (on the right) looking south on access road

Block B



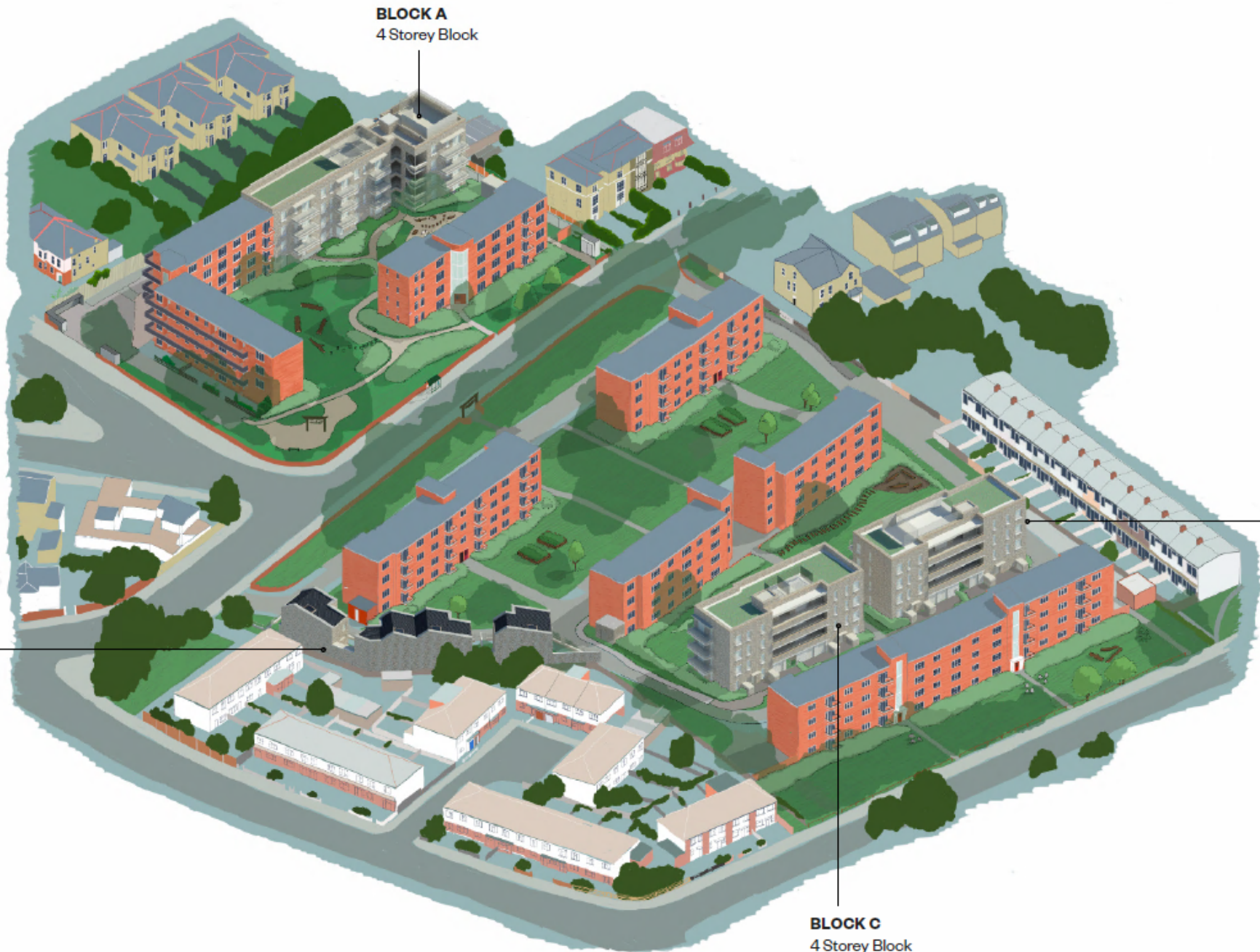
Block C



Block A

Key Legend:
Existing Buildings
Proposed Buildings

Block B



BLOCK A
4 Storey Block

BLOCK B
2 Storey Houses

BLOCK C
4 Storey Block

BLOCK D
4 Storey Block

Block A

Proposed Courtyard View



Block B

Proposed Street View



Block C & D

Proposed Approach View



Block C & D

Proposed Street View



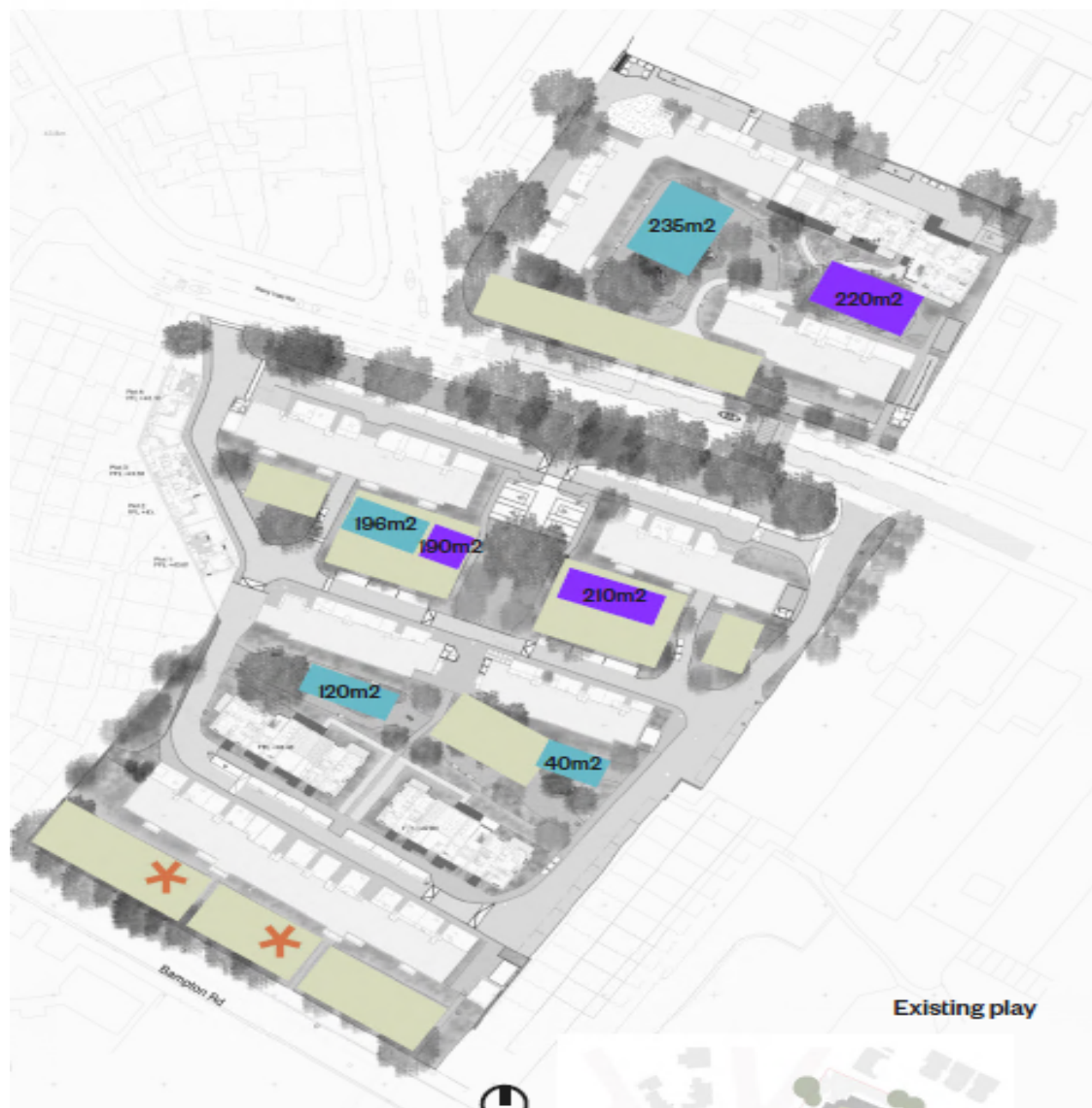
Block C & D

Proposed Courtyard View



Landscape Masterplan





Play strategy

- Play area 0-4
- Play area 5-11
- Informal open space
- ✱ Play opportunities



Landscape Street Improvements diagram-NTS

Main Planning Considerations

- Principle of development
- 100% affordable housing
- Amenity of existing and future occupiers
- Transport
- Landscape and ecology

END

Block A

Proposed North Elevation



Block A

Proposed South Elevation



Block B

Proposed East Elevation



Block B

Proposed North Elevation



Block C & D

Proposed North Elevation

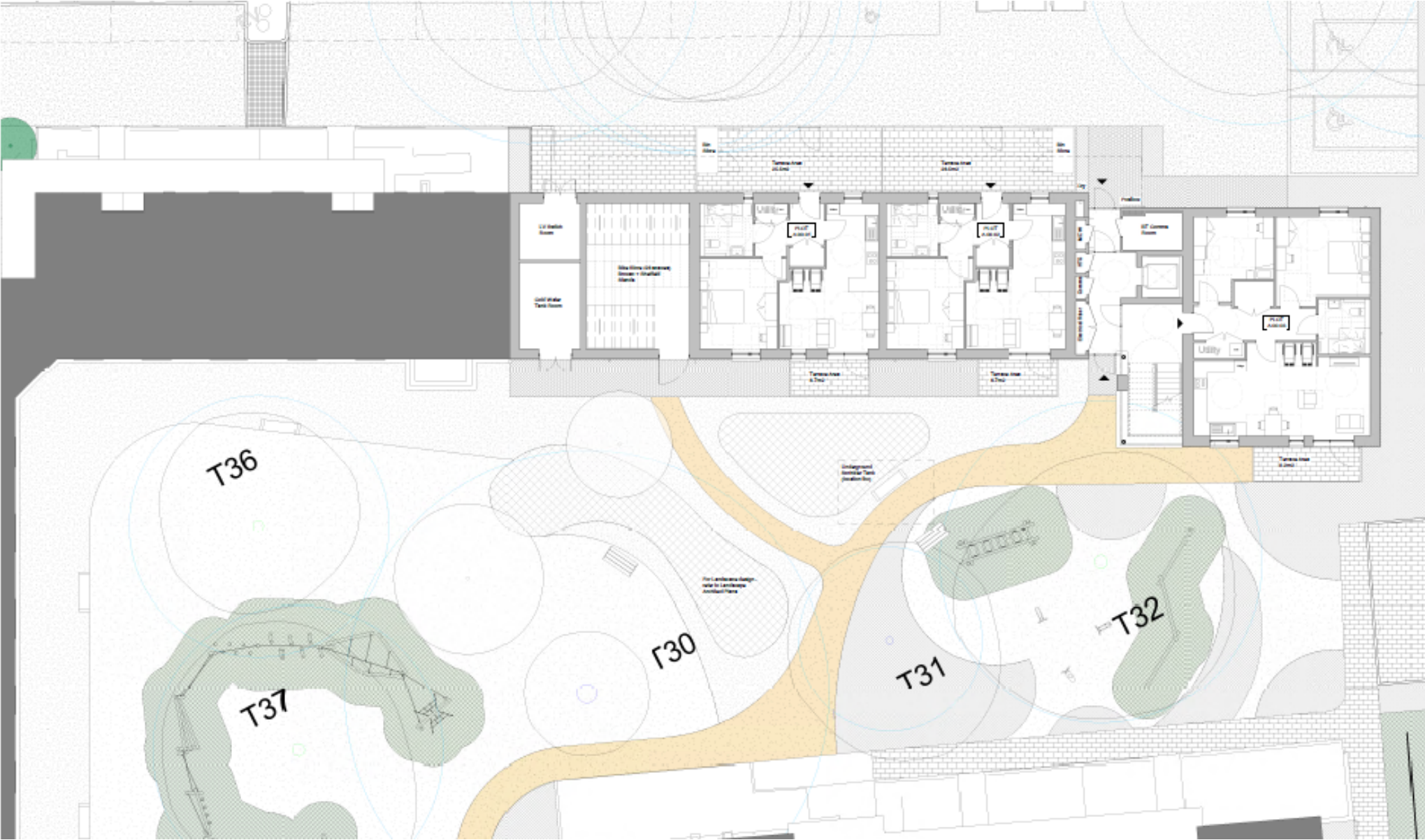


Block C & D

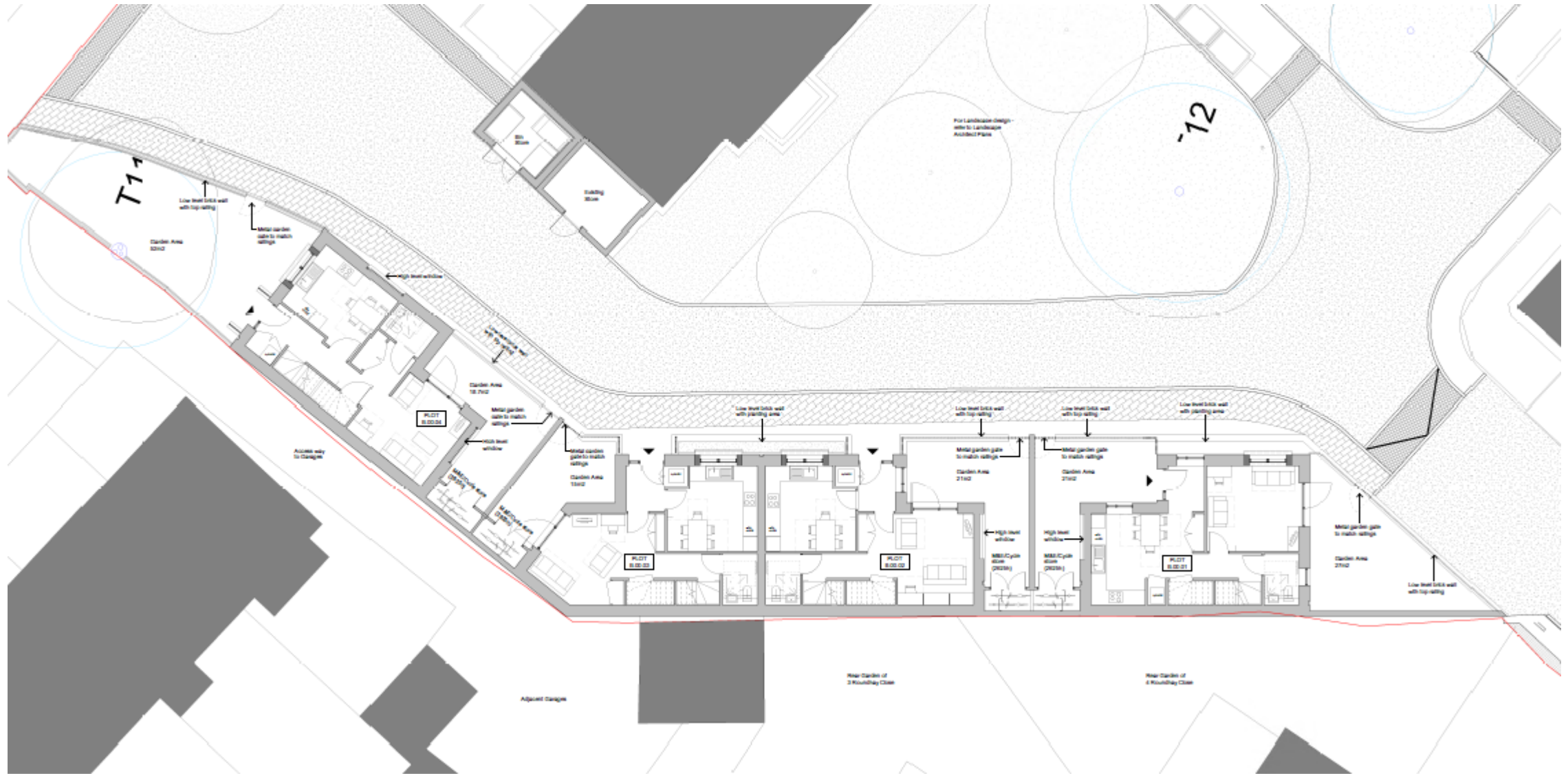
Proposed South Elevation



Block A ground floor plan



Block B ground floor plan



Block C – D ground floor plan

